

ASEC AUTOMATION (ASA)



2021-2022

Pre-qualification Document

ASEC Automation (ASA)



Table of Contents

ASA Panel Workshops were established with Well-equipped facilities managed by a team of experts in designing and building all types of electrical switchboards & control panels.



| | |
|-----|---|
| I | COMPANY PROFILE |
| II | PANELS EXPERTISE |
| III | QUALITY ASSURANCE |
| IV | TECHNICAL OFFER & COMPLIANCE WITH SPECS |
| V | PRODUCTS DATA SHEET |
| VI | APPROVALS |
| VII | REFERENCE LIST |



Company Profile

الموضوع / خطاب توضيحي لمجال عمل شركة أسيك للتحكم الآلي

يختص الموضوع عاليه بتقديم خدماتنا علمياً بأن مؤسسة أسيك للتحكم الآلي بدأت نشاطها عام 1996 حيث أننا متخصصون في المجالات الآتية :

- المقاولات الكهربائية وأنظمة التحكم الآلي
- توريد وتركيب لوحات الجهد المنخفض وبياناتها كالتالي :
 1. اللوحات العمومية والرئيسية MDB
 2. لوحات تحسين معامل القدرة PFC
 3. لوحات التحكم بالموتورات MCC
 4. لوحات الصبيل الإلكتروني والتزامن ATS & Synchronization
 5. لوحات التحكم الآلي Automation Solutions
 6. لوحات قياس وتحسين الجودة Power Quality Measurement & Improving
 7. لوحات تحكم معدلات السرعة Speed Control Drives
 8. لوحات أجهزة الوقاية Protection Devices
 9. لوحات الإضاءة Lighting Panels
 10. لوحات Soft Starters
 11. لوحات Level Panels

كما نحيط سيادتكم علماً بأننا مصنع لوحات متعدد من شركة SIEMENS إلى جانب امتلاكنا لعدد ثلاثة ورش كبرى لتصنيع وتجميع جميع أنواع اللوحات وذلك بمنطقة العين والمنطقة الحرة بكلا من الاسكندرية والسويس. في حالة وجود أي استفسارات أخرى نرحب بمواصلتكم مع د/ رأفت صالح (مدير مبيعات اللوحات)


موبايل : 01001075943

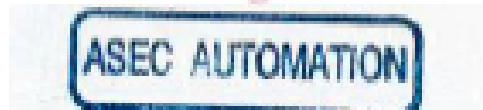
البريد الإلكتروني : Rafat.Saleh@asecautomation.com

وتفضلوا بقبول فائق الاحترام

شركة أسيك للتحكم الآلي
المدير العام




شركة أسيك للتحكم الآلي
مدير مبيعات اللوحات
هم - رأفت صالح




COMPANY MILESTONES

Foundation



ASA Automation was established as a junior member of the ASEC Holding family.

To pioneer in delivering integrated electrical contracting services.

Reinforcement



Al Qalaa Holdings' acquisition of ASEC Holding has been considered a reviving push for the Arab Swiss Engineering Company.

Which by result has given ASA Automation a firm footing in a growing and competitive electrical contracting market.

Sustainability



ASA Automation embraces a maturity phase, where it's capable of recognizing the changes in the local & global industry.

With a plan of continuing to monitor and quickly adopt its lines of business and services to sustain its 20-year record of expertise.

BUSINESS REVIEW

MISSION

To put our clients' goals and needs at the center of our integrated electrical contracting services.

VISION

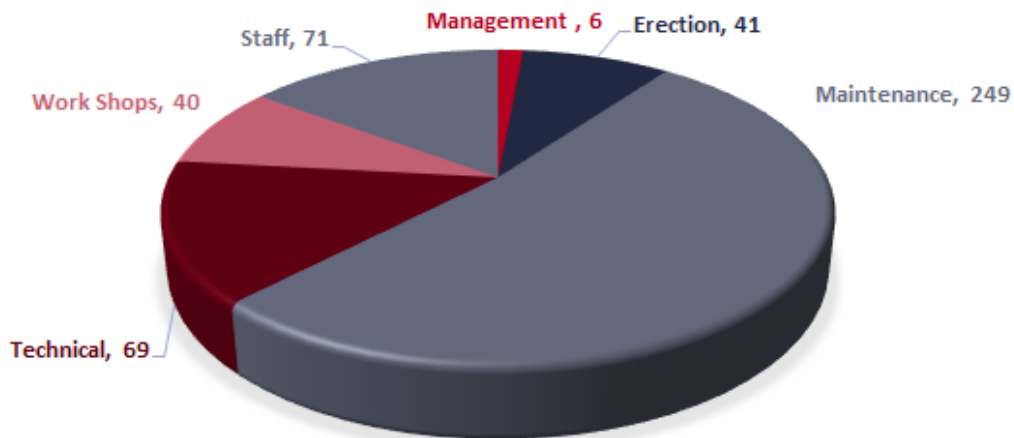
To be the first electrical contractor of choice that offers its clients sustainable growth by stimulating the positive impact of energy-saving technologies, renewable energy, and remote solutions.

ASA BUSINESS MODEL

Differentiated by the quality of our people and our relentless drive to deliver the most successful outcomes, we align our capabilities to project needs, by adopting an agile and flexible Business model that increases our abilities to scale up using different subcontracting models (TPAs, subcontracting and third party labor agreements) which resulted in a direct connection between strategic priorities, revenue and budget.

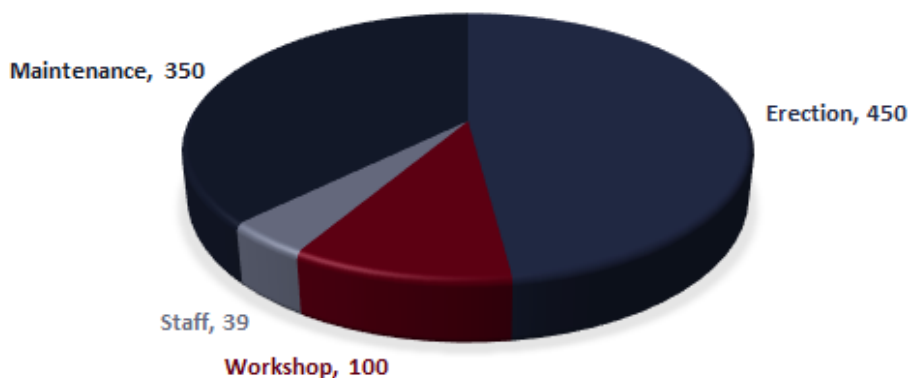
ASEC AUTOMATION EMPLOYEES

TOTAL HEADCOUNT: 476



THIRD PART HEADCOUNT

TOTAL THIRD PARTY HEADCOUNT: 1000 (EX.)



ASA GLOBAL PRESENCE



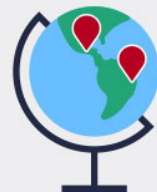
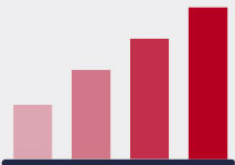
Our Key Figures

350
MILLION
EGYPTIAN POUND
TURNOVER



OPERATING IN
MORE THAN
40
COUNTRIES

500+
EMPLOYEES AT
YOUR SERVICE





A S A
SERVING THE FUTURE

Panels Expertise



Operating on 3000 m2 with an exceptional team of professionals, ASA has three workshops:

1. TIBBEN WORKSHOP

2. SUEZ FREE ZONE WORKSHOP

3. ALEXANDRIA FREE ZONE WORKSHOP

ASA Workshops carry out the following electrical panels:

- Low Voltage Distribution Boards (LVDB).
- Motor Control Centers (MCC).
- Auxiliary Control Centers (ACC).
- Marshaling Panel Logics (MPL).
- Marshaling Panel Instrumentations (MPI).
- Lighting Panels.
- Power Factor Correction Panels

ASA Workshops offer the below advantages:

- Customs free (Overseas projects).
- Sales tax-free (Overseas projects).
- Proximity to the Imports/Exports Ports (Suez & Alexandria).
- Heavy Infrastructure for Exportation and Importation.
- Strategic routing flexibility for being located in Alexandria and Suez.

ASA MCC Panels

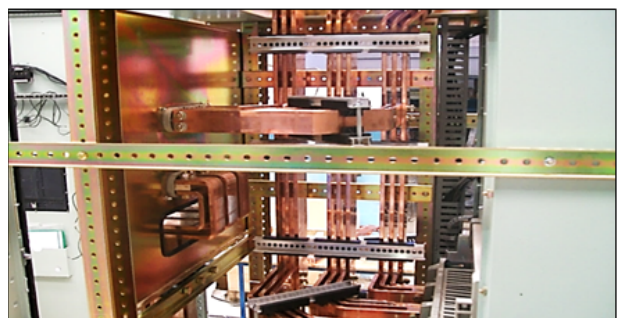
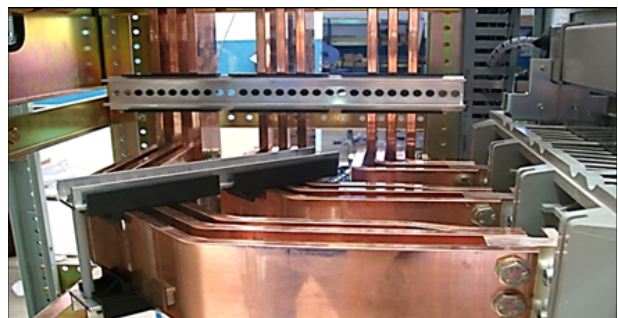


Compartment Back to Back MCC Panels

MCC Main Incomer



Incomer Front View



Incomer Copper

Outgoing Panels MCC View

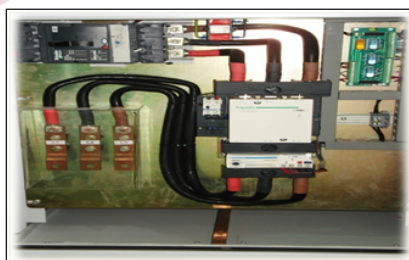


Front View



Inside View

Motor Starters



ATS Panels



Auxiliary Control Center Panels (ACC)



Inside View

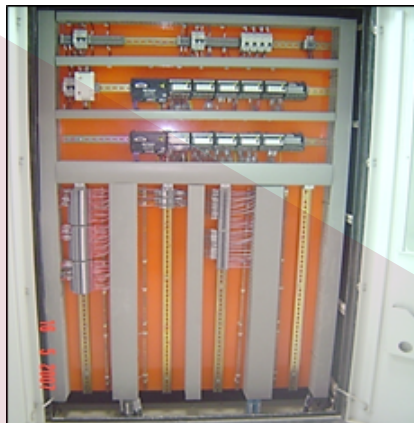
Outside View

PLC Panels

- PLC panel contains all signals to be controlled.
- The cabinet has digital and analog cards that control signals.
- The panel connected to the CPU through the interface module.



Medecon Type



Allen Bradley Cards

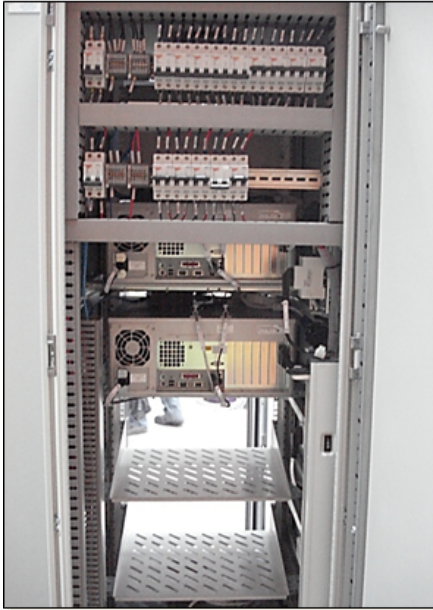


Siemens Cards

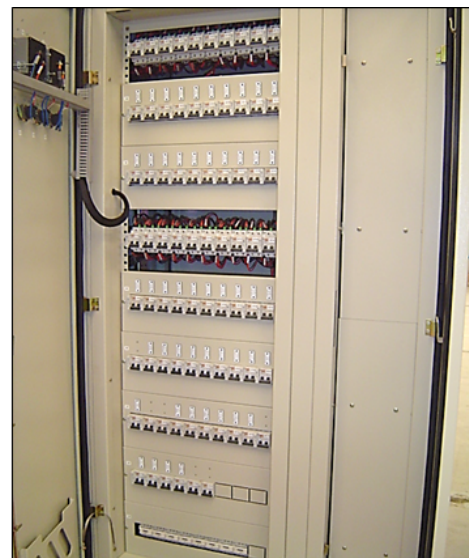


ABB Cards

Level Panels: Used for collect all CPU and server in one panel located in good environment place(I.E Centre room.

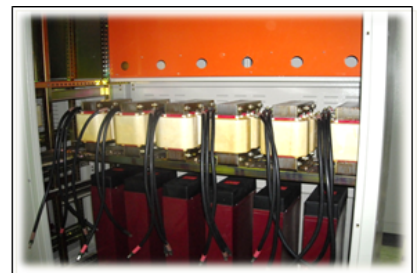
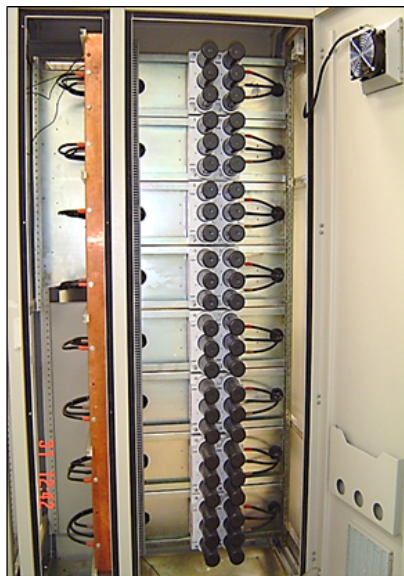


Lighting distribution panels and/or wall: Mounted boxes will be to feed indoor, outdoor lighting, and sockets in the adjacent areas.

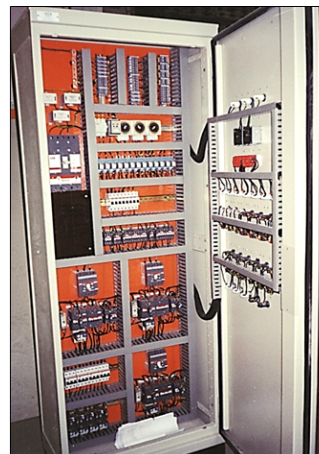
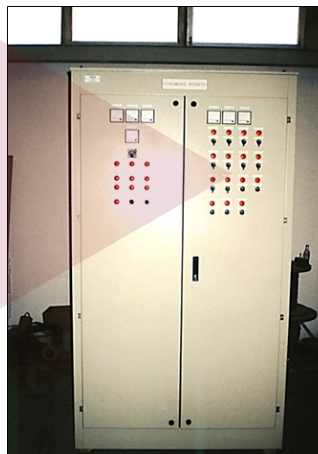


Capacitors PF Correction Panels:

According to Power network analysis using capacitor bank to improve power factor and losses in power



Local Panels



Workshop Material Brands



SIEMENS

Ingenuity for life

Solution Partner Certificate

Asec Automation
Certified

Solution
Partner

Automation
Drives

SIEMENS

The company is a certified Partner in Egypt and is authorized to use the name **Siemens Solution Partner Automation Drives**.

The certification has been proved in the following program module:

- Process Control System SIMATIC PCS 7



Alexander Frisch
Siemens Partner Program

SIVACON S4 is an AS (TTA-TSK) switchgear and controlgear system, type tested according to IEC 60439-1, for installation as primary or secondary boards in industrial and service sector facilities, including hospitals, shopping centres, banks, schools.

Overview

The SIVACON S4 energy distribution concept consists of a full line-up of boards in galvanised chromed sheet steel, of sturdy design, suitable for any installation modality: self-standing, flush or wall-mounted. SIVACON S4 low-voltage power distribution

boards are constructed according to a modular design system and, by means of ad hoc assembly kits, can be combined to meet all power distribution needs.

Benefits

- Type-tested switchgear and controlgear assembly in accordance with IEC 60439-1, EN 60439-1
- Modular system delivered as flat pack (delivery of packaged assembly kits in the form of individual and standard components with assembly drawing for do-it-yourself installation)
- New design, ventilation and locking system
- Colour RAL 7035
- Doors with universal stop
- Degrees of protection IP30, IP31, IP40, IP41, IP55
- Busbar systems up to 4000 A, Icw up to 100 kA (1 sec), Ipk up to 220 kA
- Cubicle height 2000 mm
- Base height optionally 100 mm or 200 mm
- Cubicle width optionally 400 mm, 600 mm, 800 mm, 1000 mm or 1200 mm
- Cubicle depth optionally 400 mm, 600 mm or 800 mm
- Assembly kits for Siemens switching devices SENTRON 3WL, 3VL, 3KL, 3KA as well as for built-in installation devices
- Assembly kits for copper terminal modules for Sentron 3WL, 3VL
- Forms of internal separation 1, 2, 3, 4
- Easy planning and configuration with the SIMARIS CFB software tool

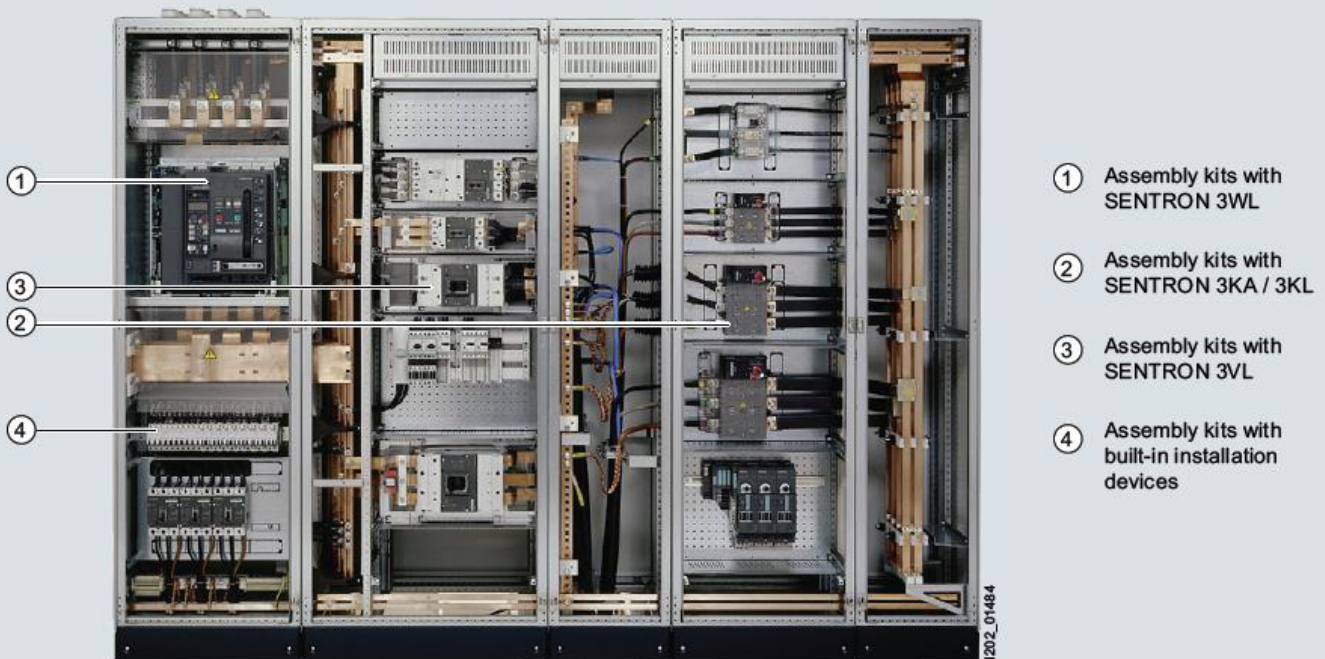
Power Distribution Board SIVACON S4 - Flexible and cost-effective

Low-voltage power distribution board SIVACON S4



**ASA PANEL WORKSHOP
IS AUTHORIZED TO
ASSEMBLE SIEMENS LV
PANEL SIVACON S4**

SIEMENS LV PANEL SIVACON S4



Assembly kits with SENTRON 3WL

- Rated current 630 A - 3,200 A
- 3-pole and 4-pole
- Withdrawable and fixed-mounted design
- Copper assembly kits

Assembly kits with SENTRON 3KA/ 3KL

- SENTRON 3KL5/6 (LBS) switch disconnectors
Rated current up to 630 A
- SENTRON 3KL7/3KA7 (LBS) switch disconnectors
Rated current up to 1,250 A
- 3-pole and 4-pole
- Fixed-mounted design
- Door coupling rotary drive

Assembly kits with SENTRON 3VL

- Rated current 160 A - 1,600 A
- 3-pole and 4-pole
- Withdrawable, fixed-mounted and plug-in design
- Manual, motor or rotary drive
- Copper assembly kits

Assembly kits with built-in installation devices

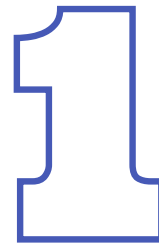
- Modular spacing
24 with 600 mm cubicle width
36 with 800 mm cubicle width
- 150 mm or 200 mm matrix
- Depth-adjustable multi-profile bus bar (AL 35 mm)
- Silkclip rapid wiring system



Technical & Commercial Offers

Products Data Sheet

SIVANCON S4 POWER DISTRIBUTION BOARDS



ALPHA 630 UNIVERSAL WALL AND FLOOR- MOUNTED DISTRIBUTION BOARDS

2



طلب معاينة مواد / معدات

المالك: وزارة الاتصالات و تكنولوجيا المعلومات

الاستشاري: جماعة المهندسين الاستشاريين

| | |
|---------------------------|-----------------------|
| مقدم من : | موجه إلى : |
| أسم وتوقيع المرسل: مهندس/ | أسم وتوقيع المستلم: |
| بتاريخ: 2018/ 10 / 25 | بتاريخ: 2018/ 10 / 25 |

إصدار رقم: 00

رقم النموذج: MAT-INS/ DC-B2 /SEC.1-P.S/ P.S.11 /017

برجاء التكرم بمعاينة واستلام المواد الآتي ذكرها تمهيدا لمتابعة الأعمال:

نوع العمل مدني ☐ معماري ☐ كهرباء ☒ ميكانيكا ☐

مرجع نموذج الاعتماد : : MAT/DC-B2/SEC.1- P.S/P.S.02&P.S.11 /002

تفاصيل الأعمال: معاينة كابل السويدي 3x10
والمرفق بأذن الصرف الخاص بها

بتاريخ : 25/10/2018

علما بأن الكابلات المذكورة جاهزة للمعاينة بالمخزن/ بالموقع

ساعة : 01:00 PM

| | | | |
|------------------|--|----------|-----------------------|
| الاستشاري المختص | الإعتماد بواسطة: | التوقيع: | بتاريخ: 2018/ 10 / 28 |
| الملاحظات | تم معاينة الكابل المورد وهو مطابق للاختيار الفني | | |

Approvals

| | | |
|------------------|-----------------|-----------------------|
| اعتماد الاستشاري | م/ | بتاريخ: 2018/ 10 / 28 |
| استلام المقاول | الاستلام بواسطة | بتاريخ: 2018/ 10 / 28 |

25 OCT 2018

Column, bar, and pie charts compare values in a single category, such as the number of products sold by each salesperson. Pie charts show each category's value as a percentage of the whole.

Column Chart



Reference List

- **FLS: Sinai Grey and Sinai White 1 & 2**
New Lines Sinai Cement Company SCC.
- **FLS: Qena line 1**
New Line Misr Cement Company MCC.
- **FLS: Line 1 & 2 upgrade**
Helwan Cement Company HCC.
- **LAFARGE: Rashadiya line A & B upgrade**
Jordan Cement Factory JCF.
- **LAFARGE: Fuhaise line 5 & 6 upgrade**
Jordan Cement Factory JCF.
- **LAFARGE: Honduras line 1 upgrade**
Honduras Cement Factory HCF.
- **CEMEX: Line 1, 2, and 3 upgrade**
Assuit Cement Company ACC.
- **BLUE CIRCLE: Alexandria line 1 New Line**
Alexandria Bortaland Cement.
- **Titan Beni Suef new line.**
- **Titan Beni Suef upgrade line 1.**
- **Titan El Max upgrade.**
- **Alstom high voltage**
Control and protection panels, West Cairo, Libya,
Suez Substation, and Maadi station.
- **GABCO, ESHPITCO, and PICO**
Petroleum Companies



Italcementi
Italcementi Group
A world class local business



asec
ENGINEERING & MANAGEMENT



LAFARGE
CEMENT DIVISION



Schneider
Electric

ELSEWEDY
ELECTRIC



TITAN
Cement Egypt
ALEXANDRIA PORTLAND CEMENT CO.

ALSTOM



THANK YOU

CONTACT US

www.asecautomation.com

T: 202 27042601/3/5/6

sales@asecautomation.com

Egypt

9, 286 Street, New Maadi,
Cairo, Egypt

UAE

Al Jazeera Al Hamra,
Ras El Khaimah, 31291 UAE

Philippines

22 San Lorenzo Drive,
Makati Manila, Philippines



SERVING THE FUTURE



@ASA-Automation

@ASA.Automation

@ASA_Automation

